

## PRODUCT SPECIFICATION

MODEL NO	HP401V-01 HP401V-02
INPUT	100-347VAC
DESCRIPTION	INDOOR STANDALONE AC INPUT PIR SENSOR
VERSION	V2.0

## INDOOR STANDALONE AC INPUT PIR SENSOR

# Features & Benefits

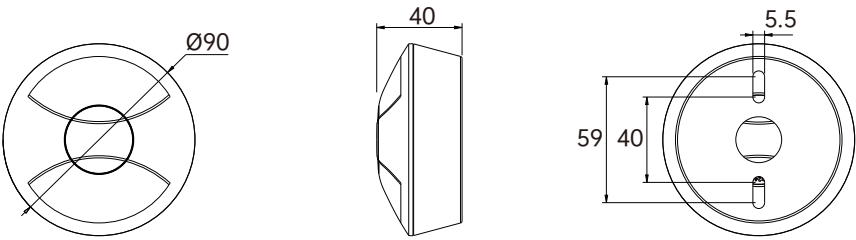


## HP401V

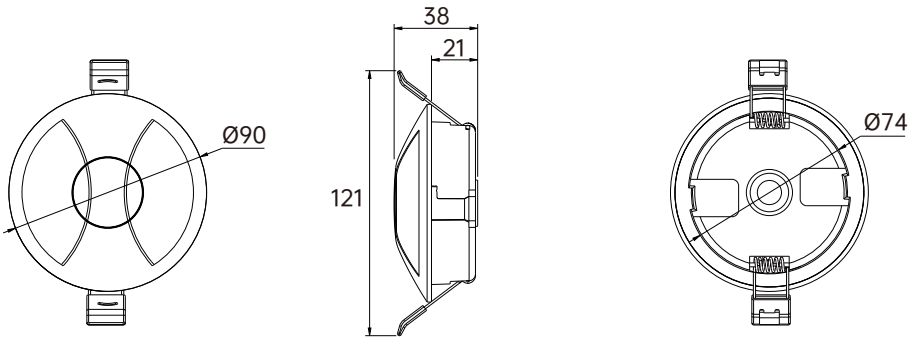
- Standalone Indoor PIR Sensor
- With Photocell Function
- Wide Range 100-347V Input
- Easy Setting With LCD Screen Display Remote Control
- Exquisite & Unique Design, Supporting Ceiling & Recessed Mounting

# Demensions Unit:mm

## HP401V-01



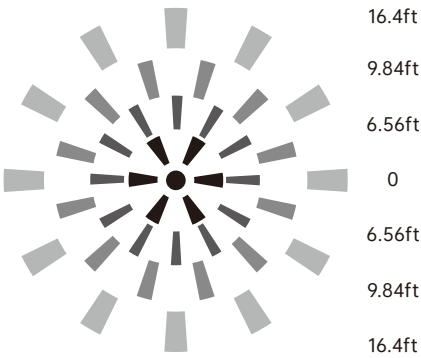
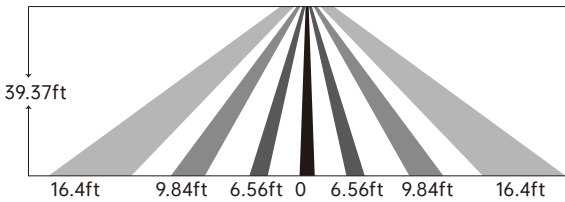
## HP401V-02



# Detection Coverage

Mounting Height  
12m/39ft Max.

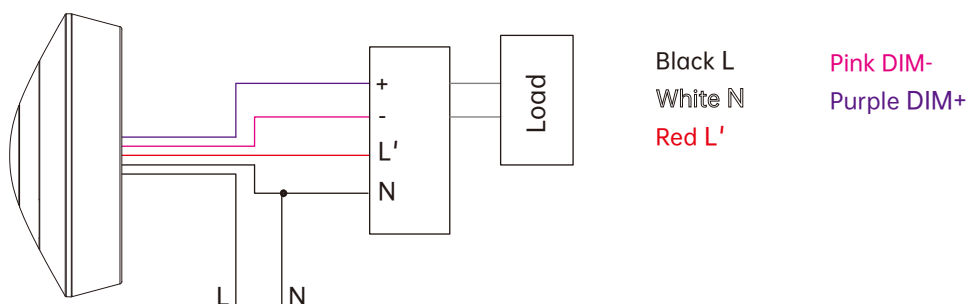
Detection Distance  
Radius 2-5m/6-16ft



## Parameters

PIR INFORMATION	Infrared Wavelength	5-14um
	Output Signal Peak	≥3500mV
	PIR Sensitivity	3200V/W
	Installation Height	12m/39ft Max.
	Detection Distance	Radius:2-5m/6-16ft
	Warranty	3 Years
	Warm-up Period	50S
	Detection Angle	Fresnel Lens <120°
SENSOR PARAMETER	Detection Area	25%/50%/75%/100%
	Holdtime	5s/30s/1min/3min/5min/10min/20min/30min
	Daylight Threshold	Disable/ 2lux/ 10lux/ 30lux/ 50lux/ 80lux/ 120lux
	Standby dimming level	10%/20%/30%/50%
	Standby period	0s/5s/30s/1min/2min/3min/5min/10min/15min/20min/25min/30min/45min/60min/+∞
	Control	DIM 0-10V
	Power Capacity(Max)	100V: 3A/400W(Control Gear) 800W (Ballast or Incandescent) 277V: 3A/800W(Control Gear) 1200W(Ballast or Incandescent) 347V: 1.2A/400W(Control Gear) 800W (Ballast or Incandescent)
	Dusk/Dawn Sensing/ Photocell	1. Automatically ON: When ambient brightness darker than preset-level and motion detected, it will turn ON the light 2. Automatically OFF: When ambient brightness about 150lux higher than preset-level or holdtime runs out, it will turn OFF the light 3. Please refer to Page 4 for additional notes.
INPUT	Voltage Range	100-347VAC
OUTPUT	Programming	Remote Control: HD05R
	Connection	Black Lin White N Red Lout Purple DIM+ Pink DIM-
	Stand-by Power	<1W
ENVIRONMENT	Working Temp	-20°C~+60°C
	Storage Temp	-40°C~+80°C Humidity: 85% (non-condensation)
CERTIFICATE & STANDARDS	Environmental Requirements	In accordance with CE ROHS
	IP Rating	IP20

## Wiring Diagram

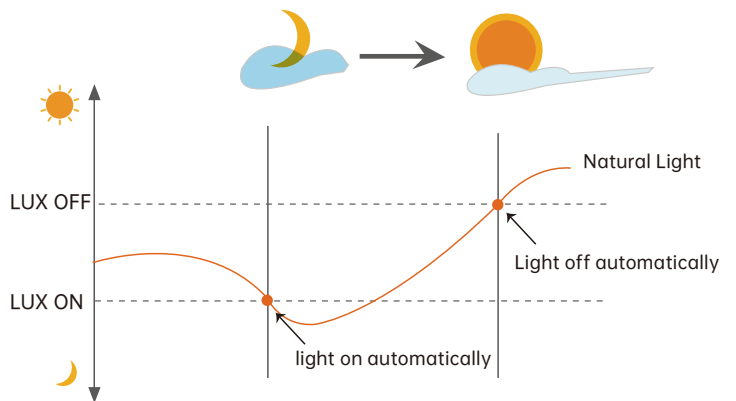


# Performance

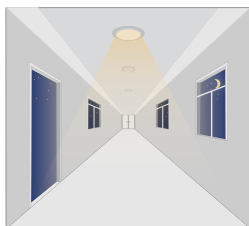
## Dusk/Dawn sensor:

When ambient brightness darker than preset-level and motion detected, it will turn ON the light; When ambient brightness about **150lux higher** than preset-level or holdtime runs out, it will turn OFF the light.

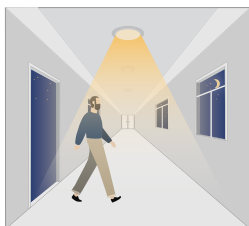
\*Daylight function works checking natural infrared light, sensor should be avoided from direct LED light or light-reflection when using in smaller application environment/rooms, in case of possible deviation result.



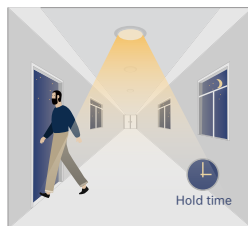
## 1. With Dusk/Dawn function



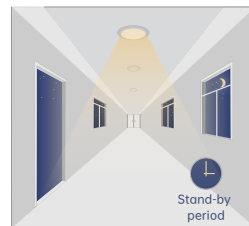
With insufficient ambient brightness, sensor turns on light and keeps it at standby dimming level even if there is no motion or presence.



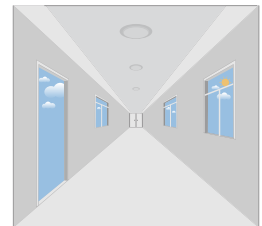
When sensor detects motion or presence it will bring the light level up to 100%.



After motion is no longer detected, fixture remains at 100% for hold time.

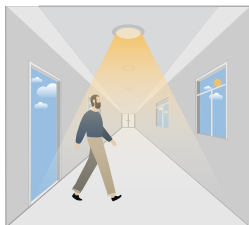


After pre-set hold time period it will dim light to standby dimming level again and always keep it.

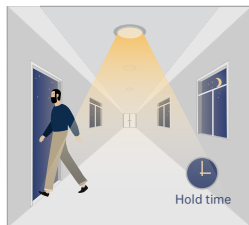


With sufficient ambient brightness, sensor will turn OFF light automatically.

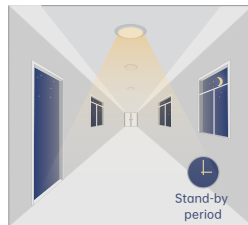
## 2. Without daylight disabled



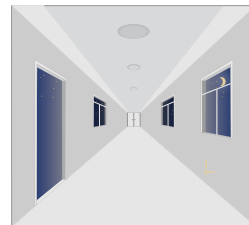
Sensor turns ON light when motion is detected.



Sensor keeps for a hold time period after motion leaves

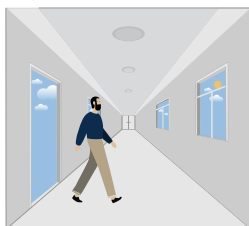


Sensor dims light to standby dimming level after hold time if there is still no motion

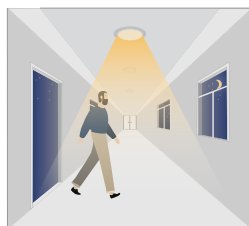


Sensor turns OFF light after standby period

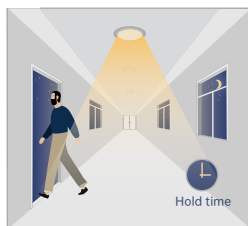
## 3. With Daylight Threshold



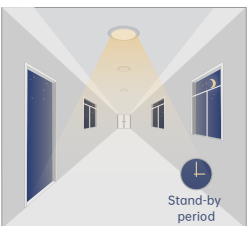
With sufficient daylight, the sensor keeps light OFF even motion gets detected



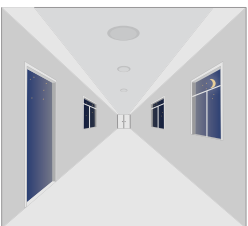
With insufficient daylight, the sensor turns light ON when motion gets detected



After there's no motion detected, the sensor keeps light ON 100% for holdtime.



After holdtime, sensor dims light to standby dimming level for standby period. if the standby period has been set as 0s, sensor turns light OFF automatically after holdtime.



The sensor turns OFF light automatically after the standby period when there's no motion detected.



## Attention

1. The sensor should be installed by qualified electrician and ensure power is OFF before installation.
2. Please read the instruction carefully before using the product and keep it well for other users to read any time.
3. We reserve the right to modify any incorrect text, image and technical parameters.
4. Any unauthorized modification is forbidden. Otherwise all guarantees will be immediately invalid.
5. Product could be optimized without prior notice.

\* When ambient temperature approaches the human body classic temperature range(36°C ~37°C/96.8~98.6°F), PIR sensor's detecting performance will significantly weaken or non-responsive.

\* When ambient temperature stays higher then 40°C/104°F, PIR sensor's detecting performance will significantly weaken.

## APPLICATION NOTES

1. Suitable for indoor application, half/completely outdoor environment conditions might trigger the sensor.
2. Suitable for ceiling mount installation, adjust sensitivity properly if it's installed on side-wall because it gets more sensitive.
3. PIR sensor can't be placed inside any material, fresnel lens must completely exposed in air.
4. Fresnel lens of the PIR sensor must be lower than light fixture.
5. Not suitable environment if there's sudden changed temperature of airflow for PIR sensor.
6. Not suitable environment if there's shelves blocking between the sensor and presence area.
7. Detection area options may NOT working obviously because it works depends on fresnel lens, it's physically defined.
8. Detection distance performance works better when moving parallelly than moving towards to the sensor.
9. Daylight testing delivered in bright day without shadow or specially designed lampshade or lens.
10. Dimming performance differs when connected to different drivers; If the driver can't completely turn OFF, sensor can't either.
11. Input power voltage must be stable with float less than 10%.
12. The first time powered ON sensor, light will be ON 100% for about 45S then dims to standby level or OFF.
13. Distance detection is delivered by testing person about 165cm in open area as reference, the result differs by size and speed of moving objects, mounting height and real-life situation.